



THE **SIXTH** FORM

at Southmoor Academy

Prospectus **2014**



Introducing THE **SIXTH** FORM at Southmoor Academy

The Sixth Form for everyone.

Welcome to The Sixth Form at Southmoor Academy and thank you for showing an interest. There are two reasons why we have chosen to call ourselves the Sixth Form. Firstly, we want to provide a genuine choice for all post-16 students in the area, regardless of the school they currently attend. Although we are proud of Southmoor, we are seeking a bigger identity and we have much greater ambition than to simply be an add-on to one existing school. To achieve this, we promise to do everything possible to welcome students from beyond Southmoor.

The second reason for calling ourselves The Sixth Form is that we are offering something unique to the area. We are not here to add to what already exists. Our vision is

to provide something different. We want to give young people the personal care, rigour, focus and aspiration, which many traditionally associate with a School, but we also want to allow them the freedom to develop as responsible young adults which many see as the advantage of a College experience.



The best that you can be.... and that's not easy...

We live in an increasingly competitive world, where success only comes to those who show dedication and aspire to do their very best.

That is exactly what we will expect from you.

We want you to imagine the very most that you can achieve and we want to take you beyond that. This means that when you join us we will set you demanding targets which we will expect you to meet. We want nothing

short of academic excellence and whilst we know that this is not easy to achieve we firmly believe that nothing worth achieving **is** easy.

The Sixth Form will not be easy, but it will bring out the best in you.



The Sixth Form Leadership Team

The Sixth Form is led by a Director supported by two assistants who are experienced teachers. There is also a Sixth Form Progress Mentor and assistant to support student well-being, academic progress, careers advice and university applications.

Director of Sixth Form

Sammy Wright



After achieving four grade As in his own A Levels, Mr Wright went on to gain a degree in English Literature from the University of Oxford (2:1). He joins us from Fortismere, a large oversubscribed and Outstanding school in London where he is Head of College of the Sixth Form of over five hundred students.

Assistant Directors of Sixth Form

Joanna Teasdale



Mrs Teasdale has four grade As at A Level, as well as a First Class degree in Biology from the University of Cambridge. She has been with us as Head of Science for the last two years and has proven herself a very able practitioner.

Samantha Ormston



With four straight grade As at A Level and a degree in Mathematics from the University of Newcastle (2:1) Mrs Ormston joins us from Burnside Academy North Tyneside where she has a high reputation as an A Level Maths specialist.

Sixth Form Progress Mentor

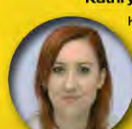
Emma Stoddart



Emma has an Honours degree (2:1) in History from the University of Newcastle. She comes to us from the Department for Business Innovation and Skills where she advises schools on UCAS and student finance.

Sixth Form Progress Mentor Assistant

Kathryn Sewell



Kathryn has an Honours degree (2:1) in English Literature from York St John University. She has a background in banking and is a former Southmoor student.

Life in The Sixth Form Community

We want you to learn in an environment which is pleasant and stimulating. Above all we want you to work in an area where you feel special....adult. That's why we make sure that much of the teaching, studying and socialising will take place in our newly refurbished Sixth Form Centre which is wireless networked throughout. To ensure the best possible I.T. access, all students will be provided with a personal tablet device at no cost.

The centre includes a café for food and drinks which are served throughout the day and this is linked to a cyber café for more informal work and social networking. As well as a number of refurbished Sixth Form teaching spaces, with state of the art presentational devices, a new and upgraded Science lab houses much of the A Level Science teaching. The Centre also has a Student Resource Area where advice and encouragement can be sought for university applications and careers options.

The Sixth Form Dress Code reflects our aim. We will provide you with a mature environment and treat you like an adult. In return we expect responsible adult behaviour from you. This is reflected in our Dress Code. We don't have a uniform because we want you to have some freedom to make appropriate choices. The Sixth Form is a professional working environment and that means that we expect you to dress as you would for work experience or an interview. We will provide detailed advice before you start.

The Sixth Form will not be all hard work. Our Sixth Form Social Committee will organise a range of trips and social events throughout the year; these more informal socials will be complemented by the widest possible range of other opportunities during your time with us.



It's all about "Where next?"

You will work hard and have a great time at The Sixth Form, but our real focus is on where you go when you leave us. We want you to progress onto a worthwhile career or a university place which will offer you a bright future. Obviously, this must mean getting the grades in the most valued subjects, but in a highly competitive market; it also means that you have to stand out from the crowd, that's why we will offer you....

The best possible advice, guidance and support based on your own personal needs and interests.

The sort of broader experiences outside the classroom which will really make you a great candidate for university and employment.

University survival techniques - support with the things you can expect to encounter as a young adult living away from home.



Pathways beyond Sixth Form

We are actively making contacts and forging the sort of partnerships which will put you in touch with the right people and give you the best experiences for your future. You can expect to benefit from....

- Partnership with Newcastle and Durham Universities to allow students to use facilities and experience university study.
- In-school and out-of-school Higher Education events.
- Trips to universities across the country.
- Specialist advice and support for those applying for Oxbridge, Medicine, Law and other competitive courses.
- Trained advice from experienced teachers and our dedicated Sixth Form Progress Mentor.
- Visiting speakers from Russell Group universities.
- Opportunities to study beyond the curriculum, whether it be producing a university style dissertation or a business plan.



Support and Guidance

Our support starts before you do. We want to make sure that you are on exactly the right course and that you have a clear idea of the value of that course to your future choices. Before you start, you will have an interview with the Director of Sixth Form who will seek to match your choices with all the available options.

Once you receive your conditional offer, before you're even enrolled, our program will begin, including:

- A two day induction program in July to prepare students for Sixth Form teaching
- A dedicated Sixth Form Tutor who will support you throughout the two years, from delivering a weekly lesson in study skills and time management at the start of year 12, to guiding you through university application or the search for other further opportunities after the end of year 13.
- The extra support of our Sixth Form Progress Mentor – trained in helping students struggling with the demands of sixth form teaching, as well as in helping those who are flourishing aim higher and aspire further. Every student will have a half-termly appointment, but can also drop in for advice when they want.
- After and before school study sessions.

Financial Support

We are determined that no student should be disadvantaged or embarrassed by financial problems. There are a range of support options that we can use, including bursaries, scholarships and help with transport, equipment etc. We will look carefully at potential issues for each student and seek to support them to the maximum of our ability. If you think you might be eligible for support please talk to us.



And for parents...

We realise that your child is growing up, but you still want to play a big part in their choices and their development. We know that you want to be kept informed with accurate and up-to-date assessments. If there's a problem you want to know about it and you want to be a part of the solution.

From the very start, we will set challenging targets based on accurate assessments of your child's previous achievements. We will keep you informed every step of the way through a system of personal reviews, interim reports and regular invitations to The Sixth Form for meaningful discussions on your child's progress. In addition to parents' evenings, we will invite you in three times over the two year course to discuss your child's progress with them and with their tutor – after mocks in each year, and in July of the summer term, when they will be thinking about where they want to go after they finish their studies.

We want our Sixth Formers to mature into responsible adults, but where they make mistakes we will act quickly to work with you and them so that they make the right decisions for their future.

Just so that we can answer any questions from parents, and keep you informed of everything we're doing, we will hold a parental information evening during July 2013.



What about students who don't currently attend Southmoor?

We want to be much more than just a part of Southmoor Academy. We want the ideas and energy of students from beyond Southmoor, and you can help us to make this happen. We are very eager to bring in students from other schools and we will make sure that once you join us you feel a part of The Sixth Form in every sense. From before you start with us, we will make sure that you have the right introductions to the right people, that you are welcomed and valued. We want you to have established new friendships before you start so that you feel right at home from the very first day.



Enrichment and Experience

We recognise that in a highly competitive market, the best career option and the top university place does not always go to the candidate with the highest grades. Employers and universities want much more. They want people who have shown a willingness to embrace a challenge, to go beyond their own experience, to demonstrate achievement and leadership outside of the normal school environment. That's why we are taking enrichment seriously.

At Southmoor you will have a unique opportunity. On Wednesdays the focus will be away from timetabled subjects, and every student will take part in both Academic Enrichment, and Extra-Curricular Enrichment.



Academic Enrichment

Every student will leave us with an extra qualification beyond their A Levels. Everyone will begin by completing the Certificate of Personal Effectiveness, worth 70 UCAS points towards your university target. You will then have the option of either switching to an Extended Project, or to the prestigious Global Perspectives and Independent Research course, both of which have been used as part of their offer by universities.

Academic Enrichment isn't just about the grades and the UCAS points. It's about independent thought, and the real world skills of lateral thinking, research, and the dedication required to become not just an exceptional student, but simply exceptional.



The Extended Project

The Extended Project is an opportunity for you to follow your own interests and in doing so demonstrate the skills and attitudes which are so attractive to universities and employers. You have a completely free choice in what you do. You might build a skateboard, design a dress, research a local issue, create a radio broadcast, write and direct a play...it's completely up to you.....

Assessment of the Extended Project is also flexible. You could write a 5000 word report or you might present your finished skateboard!



Global Perspectives and the Independent Research Project. (GPR)

This is a highly prestigious course to be undertaken by the most able students who wish to compete for the most sought after university and career opportunities. To choose this option you will need five grade As at GCSE.

The course is centred on a research project of your choice, but its assessment is much more formal than the Extended Project. In Year 12 you will be assessed on an exam, a word-limited essay and a short presentation. In Year 13 you will complete a research project on an area of your choice culminating in a 5000 word dissertation.

The course carries significant weight with many top universities.



Extra-Curricular Enrichment

As well as academic skills and experience, we want to give you the opportunity to get involved in the widest possible range of activities outside the classroom. We think you might be interested in:

- Duke of Edinburgh Award
- Community Sports Leadership
- World Challenge Expedition
- Community Volunteering
- Sixth Form Management
- Lower School Mentoring
- Sports
- Outdoor activities
- Arts club
- Engineering program
- Film making
- Debating
- Creative Writing
- Work placements

- Medical experience
- Law experience
- Charity work
- Expedition fundraising
- School drama productions
- Music groups
- Science lectures
- Youth Parliament

You might also like to produce our in-house Sixth Form Magazine, play for our Sixth Form sports teams or manage a team of our younger students. You might produce, direct or perform in our many shows and entertainments, develop your own small business or help us grow our community projects.

You will have an opportunity to experience leadership, making real decisions on how your Sixth Form is developed and led. You might get involved in the Sixth Form Management Team, Charity and Fundraising Committee, Entertainment and Social Group or Sports Teams Committee.



Other Awards and Experiences.

Duke of Edinburgh Award Silver and Gold.

Duke of Edinburgh Awards are internationally recognised badges of achievement. Not only do they showcase your dedication, adaptability and leadership to potential universities and employers, but they are also hugely rewarding on a personal level. You will engage in community work, learn new skills, and plan and execute your own expedition. More than anything else, the D of E will challenge you to step out of the classroom, and out of your comfort zone, and find what you are really capable of.

Those taking the Duke of Edinburgh Gold Award will undertake outdoor training weekends throughout their time in The Sixth Form culminating in a five day residential and a four day expedition, trekking and climbing through the wild country. Go tell an employer or university about that in an interview!

International Expedition

At the end of year 13 you will have the chance to go on a trip of a lifetime. Where will you go, Africa, Asia, Central or South America? We are working with a number of organisations such as Operation Raleigh and True Adventure who provide a choice of quality expeditions, lasting up to 4 weeks. This will involve adventure and project opportunities in a part of the world you never thought you would see.

The Tall Ships

Sail Training International are looking for crew and it could be you. The team work and social skills you will take from an opportunity like this will be truly amazing.

National Citizenship Service

This award allows you to take on new challenges whilst meeting new friends. Stand out from the crowd by doing work which improves the lives of other people in your community.



The Curriculum Choice

Our curriculum has been designed to give students the best possible future opportunities. This means offering those qualifications which open most doors with employers and universities. Our offer is based around the following A Levels:

- | | |
|-----------------------------|--------------------|
| • Maths | • Music |
| • Further Maths | • Film Studies |
| • English Language | • Fine Art |
| • English Literature | • Politics |
| • Physics | • Law |
| • Chemistry | • Applied ICT |
| • Biology | • Computing |
| • Geography | • Psychology |
| • History | • PE |
| • German | • Media |
| • French | • Photography |
| • Drama and Theatre Studies | • Applied Business |

Clearly the offer must change on an annual basis depending on student choice; this means that if we have a significant demand for any subject we may introduce new options. So if you don't see what you really want here don't be afraid to ask. You should also remember that anything which is not in the taught curriculum will almost certainly be happening outside lessons and even if it isn't, you can make it happen!

Biology

Why study Biology?

Biology is the study of life! You will explore in detail how living things work and will investigate how they depend on each other to survive. We will discuss how modern scientific research contributes to the wellbeing of individuals and societies.

What will I study?

In Year 12 (AS), we study disease and the variety of life, along with developing your skills in scientific investigation.

In Year 13 (A2), we study the environment and control in cells and organisms, along with further refining your investigative and practical skills.

How is Biology assessed?

In Year 12, Biology is assessed through two separate examinations (33% and 47%) and an investigative and practical skills assessment in school (20%).

In Year 13, Biology is assessed through two separate examinations (33% and 47%) and an investigative and practical skills assessment in school (20%).

Subject specific requirements?

You must have 'B grades' in Core and Additional Science, including evidence of this in examination units. A 'B grade' in Further Additional Science would also be desirable, but is not essential.



Chemistry AS/A Level

Why study Chemistry?

Chemistry is a vibrant and exciting subject! It impacts on everything around us. Because it is so fundamental to our world, chemistry plays a role in everyone's lives and touches almost every aspect of our existence in some way.

What will I study?

In Year 12 (AS), foundation chemistry and chemistry in action alongside developing your investigative and practical skills in chemistry.

In Year 13 (A2), kinetics, equilibria and organic and inorganic chemistry with further work on investigative and practical skills in chemistry.

How is Chemistry assessed?

In Year 12, Chemistry is assessed through two separate examinations (33% and 47%) and an investigative and practical skills assessment in school (20%).

In Year 13, Chemistry is assessed through two separate examinations (40% and 40%) and an investigative and practical skills assessment in school (20%).



Subject specific requirements?

You must have a grade B in Core and Additional Science, including evidence of this in examination units. A grade B in Further Additional Science would also be desirable, but is not essential.

Business (Applied) AS/A Level

Why study Business?

Applied Business provides the opportunity for students to explore the world of business in a highly practical way. By adopting an investigative approach, students develop a range of skills, while discovering the problems and opportunities faced by businesses in realistic contexts.

What will I study?

At AS Level (Year 12), you will study the aims and objectives of businesses, including the needs of their customers and marketing a product; people in business, including roles, responsibilities, training and development, motivation, recruitment and interviewing; and financial planning and monitoring, including sources of finance, calculating costs, revenue and profits.

At A2 Level (Year 13), you will learn about business planning, promotional activities and managing people.

How is Applied Business assessed?

During Year 12 (AS Level), you will complete two pieces of coursework and sit one written exam, each worth 33% of the AS Level Qualification.

In Year 13 (A2 Level), you will complete a further two pieces of coursework and sit one further written exam, each worth 33% of the A2 Level Qualification.



Subject specific requirements?

It is not necessary for you to have followed a course in Business Studies at GCSE level. The standard Sixth Form entry requirement of a minimum of 5 GCSEs at A*-C grade, including English and Maths is all that we ask for.

What will I study?

In Year 12 (AS), foundation business and business in action alongside developing your investigative and practical skills in business.

In Year 13 (A2), kinetics, equilibria and organic and inorganic chemistry with further work on investigative and practical skills in chemistry.

Drama and Theatre Studies AS/A Level

Why study Drama and Theatre?

AS/A Level Drama and Theatre Studies will provide candidates with the confidence and experience required for all forms of further and higher education. It combines the activities of exploring plays, creating theatre, the performing of plays, the analysis of theatre and the critical evaluation of all of these elements.

What will I study?

The Drama and Theatre Studies A Level combines the study and performance of plays with a critical analysis of theatre. Students completing the course successfully will have a thorough understanding of drama and theatre, highly toned analytical and creative skills and an ability to communicate effectively with others.



How is Drama and Theatre Studies assessed?

The assessment of exploring theatre and performance are assessed internally and externally moderated. Whilst text work based performance and the theatre in context is externally assessed by an Edexcel examiner

Subject Specific Requirements?

Minimum grade B in GCSE Drama.

English Language AS/A Level

Why study English Language?

It's fascinating! We use language – written, spoken and electronic all of the time, but do we stop to consider HOW language is used and question it? Effective study of language requires curiosity, a keen eye and ear, a questioning approach and awareness of key concepts. You will learn to look out for the smallest clues in a text as to its purpose and meaning and, like a detective, you will be stepping back from the individual words to assess the wider context. This is a key life and employment skill.

What will I study?

In Year 12 you will explore similarities and differences between a range of real-life texts, as well as considering the relationship between language and gender, language and technology and language and power. You will be required to produce a folder comprising **two** pieces of original writing, which are different in terms of audience, purpose and genre, and **two** commentaries which explore the writing process and assess the success of the individual pieces.

In Year 13 you will cover Language Acquisition and Language Change, which will build on the skills developed in Year 12 and introduce you to the evolution of language as well as the development of early year's language in children. You will also produce a piece of language investigation coursework, based on a topic of your choice, and a media text linked to your area of study.

How is English Language assessed?

AS is assessed through one end of year exam and your coursework folder, which are worth 60% and 40% of the AS respectively.

A2 is also assessed through an end of year exam and your language investigation, worth 30% and 20% of the full A Level respectively.



Subject specific requirements?

Minimum GCSE grade B in English Language.

English Literature

Why study this English Literature?

If you have a love of language, words and phrases, and how they are used imaginatively in a range of genres and styles of texts from Shakespeare's time to the modern day, you will love the study literature. Exploring traditional and contemporary texts will encourage you to think more deeply about yourself and your relationship with others, as well as associate texts with history and social change. Having the opportunity to share ideas with others and investigate writers' aims and different writing styles is an enlightening and valuable experience.

What will I study?

In Year 12, you will focus on poetry and prose, from 1800-1945, analysing language, structure and form, as well as understanding the way texts relate to one another and the impact of the social and historical contexts.

In Year 13, you will explore pre-1800 drama and poetry, and a wide range of prose, evaluating contrasts and comparisons between and within different genres.

How is English Literature assessed?

In Year 12 you will be assessed through two coursework tasks (40%) and one two-hour examination (60%). In Year 13 you will complete one coursework task (40%) and one two-hour examination (60%). Both AS and A2 levels have 50% weighting for final grade.



Subject specific requirements?

Grade B in English Language GCSE.

Film Studies AS/A Level

Why study Film?

Films are a popular art form, an international industry, an influential ideological force, and a source of considerable pleasure. Studying film gives an interesting and worthwhile insight into psychology, culture, society, philosophy, politics and economics, as well as being very enjoyable.

What will I study?

AS and A Level film studies uses a combination of analysis, research, theory and creative work to study examples from British, American and world cinema, examining their production, form and reception, and relating these to cultural, social and political contexts. It would be of interest to anyone who enjoys watching and discussing films and is keen to learn more. In Year 12 we will study film form, with a focus on British and American Film. In Year 13 you will complete both a written investigation and participate in creative productions.

How is Film Studies assessed?

50% Coursework/ 50% External Examination.



Subject specific requirements?

Grade B in GCSE English Language or English Literature. A genuine interest in and enthusiasm for all aspects of the film industry would be a distinct advantage.

Fine Art AS/A Level

Why study this Fine Art?

This is an exciting and challenging opportunity to learn much more about what it means to be a creative and imaginative visual artist. We will build on your existing talent and enthusiasm to help you acquire new skills, broaden your knowledge, and give you the confidence to achieve your full potential in this rich and exciting subject area. You will be introduced to a variety of experiences exploring a range of fine art media, including traditional and new techniques and technologies.

What will I study?

The course allows you to work in one or more areas of fine art such as painting and drawing, mixed media (including collage and assemblage), sculpture, land art, installation and photography (lens-based and /or light-based media). In Year 13 a personal investigation consists of a written element of 1000-3000 words.



How is Fine Art assessed?

At the end of year 12, AS level is assessed on a coursework portfolio and through an externally set assignment. Both carry a 50% weighting.

In Year 13, there is a written personal investigation and an externally set assignment. Both carry a 50% weighting.

Subject specific requirements?

Grade B in GCSE Art.

French AS/A Level

Why study French?

As international travel and communication become increasingly easy, knowledge of another language is growing in importance. A Level French offers you the opportunity to develop your command of the French language, bringing you in close contact with the culture and heritage of the French-speaking world. The course is aimed at students with a love of language learning who wish to develop their skills and knowledge further.

What will I study?

In year 12, we will study four topic areas: media, popular culture, healthy living/lifestyle and family/relationships. In year 13, we will study the environment, the multicultural society, contemporary social issues and two cultural topics, such as a French director, author or dramatist.



How is French assessed?

At the end of year 12, the AS level is assessed through a listening, reading and writing examination worth 70%, and a speaking examination worth 30%. At the end of year 13, the A2 is assessed through a listening, reading and writing examination worth 35%, and a speaking exam worth 15%.

Subject specific requirements?

Minimum grade B in GCSE French.

A Level Geography AS/A2 Level

Why study Geography?

You should study Geography if you are interested in the key challenges and issues in the world today, such as climate change, globalisation, urban regeneration and management of the world's resources. The aim of this course is to provide you with knowledge and understanding of physical process and how human behaviours shape the world.

What will I study?

At AS level (year 12) you will study rivers and their process, world population, health issues and glaciations, as well as basic geographical skills such as map reading. At A2 level (year 13) you will study tectonics and their hazards (earthquakes, volcanoes and tsunamis), world weather, world cities and contemporary conflicts of the world.



How is Geography assessed?

At the end of Year 12 you will be assessed by two examinations worth 50% of your overall A Level.

There are two examinations in Year 13, you will be assessed by two examinations worth 50% of your overall A Level.

Subject specific requirements.

Minimum grade C in GCSE Geography or grade B in English Language is highly recommended.

German AS/A Level

Why study German?

A Level German offers you the opportunity to develop your command of the German language, bringing you in close contact with the culture and heritage of the German-speaking world. The course is aimed at students with a love of language learning who wish to develop their skills and knowledge further.

What will I study?

At AS, in year 12, we will study media, popular culture, healthy living/lifestyle and family/relationships. In year 13, we will study the environment, the multicultural society, contemporary social issues and two cultural topics, such as a German director, author or dramatist.



How is German assessed?

In Year 12, the AS level is assessed through a listening, reading and writing examination worth 70%, and a speaking examination worth 30%. At the end of year 13, the remaining 50% is assessed through a listening, reading and writing examination worth 35%, and a speaking examination worth 15%.

Subject specific requirements?

Minimum grade B in GCSE German.

History AS/A Level

Why study History?

Most people who choose History at A level do so, first and foremost, because they find the subject matter appealing. If you have a natural interest in the society around you and are interested in current affairs, then you will almost certainly enjoy studying History. It encourages you to understand and think intelligently, as well as gaining vital skills which are appreciated by a huge variety of employers.

What will I study?

In Y12 (AS) we will study America in the first half of the twentieth century and Britain in the 1960s. In Y13 (A2) we will study Britain between 1918 and 1964 and complete coursework on Russia.

How is History assessed?

At the end of Y12 AS is assessed through two examinations (each worth 50%). In Y13, A2 is assessed through one examination worth 30% and one Historical Enquiry worth 20%.



Subject specific requirements?

Minimum grade B at GCSE English and GCSE History.

ICT (Applied A Level)

Why study ICT?

Applied ICT is a course that is mostly practical and will help you to develop the ICT skills required in business. You will use ICT to solve problems, develop your project management skills and have the opportunity to work with others. If you're interested in designing computer systems to solve ICT related problems, then this could be the course for you.

What will I study?

In Year 12, you will consider how organisations use ICT and the impact the 'Information age' has on businesses. You will investigate how individuals and society use ICT, including the use of digital communication.

In Year 13, you will study the specifications of system hardware and software and issues regarding safety and security when using ICT. You will also be introduced to programming and software design and development.

How is Applied ICT assessed?

In each year you will study three different units. Two of these units are coursework which are worth 33% each and one examination which is also worth 33%. Therefore, each unit will count towards 16.7% of an overall A Level.



Subject specific requirements?

Prior study of GCSE ICT or GCSE Computing may be beneficial but not essential.

Law - AS/A Level

Why study Law?

Law has an impact on everyone on a daily basis and is an essential part of society. Studying Law at A Level will give you an excellent grounding in the English legal system, develop your analytical and problem-solving skills and your ability to construct and communicate arguments effectively, all essential for higher education, as well as providing a great foundation for a legal or business career.

What will I study?

At AS Level (Year 12), you will study the way law is made by Parliament and Judges and the roles of different people within the legal system, including magistrates, juries, solicitors, barristers and judges. You will also study the concept of liability, including the offences of assault, battery, grievous bodily harm and negligence.

At A2 Level (Year 13), you will study criminal law, including offences against the person, such as murder and manslaughter, as well as offences against property, such as theft and burglary.

How is Law assessed?

In Year 12, there are two written examinations, each worth 50% of the AS Level Qualification.

In Year 13 there are a further two written examinations, each worth 50% of the A2 Level Qualification.



Subject specific requirements?

It is not necessary for you to have followed a course in Law at GCSE level. The entry requirements include a minimum of 5 GCSEs at A*-C grade, including English language at a grade B or above.

Mathematics AS/A Level

Why study Mathematics?

The course allows you to broaden your mathematical skills and understanding in different areas of the subject and see how this applies to the real world. A Level Mathematics is focused on solving problems, and will require a lot of perseverance – but can offer great rewards for those who are prepared to work hard!

What will I study?

You will study more complex uses of algebra and functions, with practical applications ranging from investigating the link between numbers and patterns in nature to using algebra to understand the path taken by a golf ball.

The Statistics and Decisions modules allow further study of the applications of mathematics to real life situations. You will investigate the mathematics of simple gambling problems, solve problems involving networks and modelling time scales for projects that could be used in industries such as engineering, technology and construction.

How is Mathematics assessed?

In Year 12 and Year 13 students sit three equally weighted examinations.



Subject specific requirements?

Minimum high grade B in GCSE Mathematics (grade A / A* highly recommended).

Further Mathematics AS/A Level

Why study Further Mathematics?

The course is specifically designed for the most able mathematicians, allowing them to advance their knowledge of algebra, calculus and other areas of pure mathematics, as well as studying further applications of mechanics, statistics and decision mathematics.

What will I study?

As part of Further Mathematics A Level, students will study some of the more abstract areas of mathematics such as 'imaginary' and 'real' numbers as well as further modules in the applications of mathematics to the world around them.

There are 3 different application modules: Decisions, Mechanics and Statistics. Module choice, and therefore course content, is flexible depending on the options of each individual student.

How is it Further Mathematics assessed?

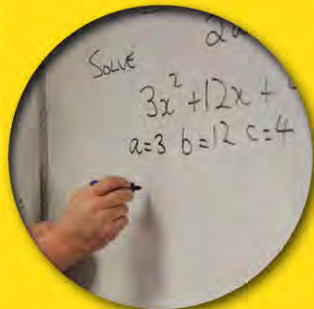
At AS Level, students will sit 3 modular examinations in addition to those taken for A Level Mathematics. Each examination is 1 hour 30 minutes and is worth 1/3 of the AS Further Mathematics grade.

Note - An AS Level in Further Mathematics will be run over Year 12 and Year 13 outside of the normal timetable and therefore, will serve as an additional qualification to students on top of their other A Level choices.

There is an option for students to extend their AS Level to an A Level in Further Mathematics should they wish to do so.

Subject specific requirements?

Grade A* in GCSE Mathematics. You must also be doing A Level Mathematics.



Media Studies AS/A Level

Why study Media?

This course will allow you to develop a critical and analytical approach to different types of media texts, as well as the media institutions which create and circulate them. You will explore all aspects of today's media world, including newspapers, magazines, TV, film, radio, advertising and the internet. You will also consider the changes and debates surrounding the rise and development of digital media.

What will I study?

At AS level, you will study the key concepts of media with a focus media language and audience. You will also produce a magazine or a film trailer and write a report on the production processes.

At A2 level, you will complete a written investigation and design a media production (different to AS). You will participate in a detailed study of media industry, examining the links between audience and text.

How is Media Studies assessed?

50% Coursework/ 50% external examination.



Subject specific requirements?

Grade B in GCSE English Language or English Literature. A genuine interest in, and enthusiasm for, all aspects of the media would be a distinct advantage.

Music AS/A Level

Why study Music?

A Level Music is appealing, accessible and approachable. It will provide candidates with the knowledge and experience for all forms of further and higher education and will give them understanding, and encourage appreciation, of all music genres.

What will I study?

The Music A Level course offers an excellent opportunity to develop your performance and musical knowledge in many ways. You will study Composition or Arranging, Listening and Understanding of music from Renaissance to Pop music, and you will be given the opportunity to perform in whatever style you choose, with expert coaching from our experienced instrumental tutors.

How is Music assessed?

The assessment of Composing or Arranging, and Listening and Understanding, are externally assessed by AQA examiners. Performances are internally assessed and externally moderated.



Subject specific requirements?

Minimum grade B in GCSE Music.

Physical Education AS/A Level

Why study Physical Education?

This course offers students the opportunity to experience and develop an interest in a variety of roles in sport such as performer, official and/or leader/coach. You will address current contemporary topics in sport such as the impact in the use of technology and increasing commercialisation. It is not a requirement to have studied Physical Education at GCSE level.

What will I study?

In Year 12, Applied Exercise Physiology, Skill Acquisition, Opportunities for participation to support a healthy lifestyle. You will also analyse and evaluate performance (your own and others) in the role of performer, coach and official. In Year 13, you will study ways of optimising performance as well as looking at prominent issues in contemporary sport.

How is A Level Physical Education assessed?

In both Year 12 and 13 there is an examination (60%) and a coursework evaluation of performance (40%).

Subject specific requirements?

Minimum grade B in GCSE PE (or other related subjects).



Photography AS/A Level

Why study Photography?

The Photography course presents you with exciting and challenging opportunities to learn much more about what it means to be a creative and imaginative practitioner in photography, and to develop in this way throughout the course.

What will I study?

The course allows you to work in one or more areas of photography, such as portraiture, landscape (working from the urban, rural and/or coastal environment), still life, working from objects or from the natural world, documentary, photojournalism and experimental imagery. There is a written element (1000-3000 word project) in Year 13.



How is Photography assessed?

Year 12 coursework portfolio (50%) and externally set assignment (50%). In Year 13 there is a personal investigation (50%) and an externally set assignment (50%).

Subject specific requirements?

Grade B in GCSE Photography (students who really show an intense interest in the subject / show talent, and may have missed out on the GCSE, may be considered for the course after interview).

Physics AS/A Level

Why study Physics?

A Level Physics gives you a seamless transition from GCSE to university courses in Physics and the many Physics-related disciplines. A Level Physics allows you to appreciate how Science works, and provides a foundation for the study optional topics, including Astrophysics, Medical Physics and Applied Physics.

What will I study?

In year 12, you will learn about fundamental particles and forces and explore quantum physics.

In year 13, you will cover essential topics for progression to post A-level studies including electric, magnetic and gravitational fields, nuclear physics and thermodynamics.



How is Physics assessed?

In both Year 12 and Year 13 there are two written examinations each worth 40%. An additional 20% in each year is awarded for investigative and practical skills.

Subject specific requirements?

High grade B in Core and Additional Science, including evidence of this level of attainment in examination units. A grade B in Further Additional Science or in GCSE Physics would be desirable, but not essential.

You will also need a minimum of a high grade B in Mathematics, and although not essential, choosing to study Mathematics beyond GCSE is recommended.

Government and Politics AS/A Level

Why study Government and Politics?

Almost everything that we experience in the modern world is connected to Politics, from how much tax we pay to what kind of education we receive. Politics on a national and global scale will also affect our future security and quality of life. This course will help you develop a number of new skills: research and analysis of key issues, the ability to debate and understand the opinions of others, alongside gaining a deeper understanding of issues within the UK political system.

What will I study?

In Year 12, you will study how governments are elected and how Parliament, the Cabinet and the Prime Minister all do their job. In Year 13, you will study the politics of the USA, its similarities and differences with our own system.



How is Government and Politics assessed?

Assessment of A Level Government & Politics is by examination only.

Subject specific requirements?

No prior knowledge of the subject is required, but you must have at least GCSE Grade B in English.

Psychology AS/A Level

Why study Psychology?

Psychology is the fascinating scientific study of behaviour. Psychology will equip you with the skills and knowledge to decode human behaviour in everyday life using scientific methods of careful research, experimentation and statistical analysis.

What will I study?

You can expect to develop an understanding of different areas of psychology such as cognition, child development, social psychology and individual differences. You will also learn how topical issues, such as eyewitness testimony, the media and stress, can be better understood and managed by looking at them from a psychological perspective.



How is Psychology assessed?

Assessment is by examination only.

Subject specific requirement?

No prior knowledge of the subject is required, but you must have a grade B in GCSE English and at least a grade C in science.

Entry Requirements

We are eager to ensure that you are on a course where you will succeed. We will offer an interview to every applicant to assess your interests and support you in making the right choice. Our basic requirement is five grade A*-C in GCSE including English, but individual subjects will have specific requirements which will usually be a grade B in the relevant GCSE. You can see exactly what is required by reading the detailed section of each individual course.



What happens next?

Our first Open Evening is on 12 December 2013. Please attend if you can, but don't worry if you miss it as we will be holding another Open Evening in the Spring. Watch our website for announcements and further details or contact the school to be placed on our mailing list.

From 12 December onwards we will be accepting applications which can be completed on paper or online. Applications should be returned by Friday 31st January 2014. Conditional offers will be made from this date onwards. We are happy to consider late applicants, but would always advise potential students to meet the deadlines where possible. From January onwards we will begin to interview all applicants.

In July we will invite all those holding conditional offers to a two day induction program and this will give you the opportunity to meet and exchange contacts with other students. If you are new to the school we will ensure that you are linked in via social media with existing Southmoor students and you will get to meet all your future teachers and hear their plans for the coming year.





THE SIXTH FORM
Southmoor Academy
Ryhope Road
Sunderland
SR2 7TF

e-mail: southmoor@schools.sunderland.gov.uk

www.southmoorschool.co.uk



ADDENDUM TO THE SIXTH FORM PROSPECTUS

Please see below some additions / amendments to information in the prospectus.

ADDITIONAL INFORMATION:

Computing AS/A Level

Why study Computing?

Computing is a challenging yet rewarding subject. This modern qualification gives students a general grounding in computing, including an understanding of computer systems, the principles of programming and problem-solving. Through this qualification, pupils develop the capacity to think creatively, innovatively, analytically, logically and critically, which are all essential transferable skills. It is excellent preparation for students looking to take computing studies at degree level, or for anyone considering any kind of career in computing.

What will I study?

At AS level, you will study Unit 1 (Computer Fundamentals) that gives an understanding of hardware and software. You will learn about structure and management of data, how data is transmitted and the basics of networks. In Unit 2 (Programming Techniques and Logical Methods), students gain an appreciation of how to tackle and solve real-world problems by designing and creating computer programs.

At A 2 Level, students gain a more in depth knowledge of advanced computing topics, such as operating systems, programming and databases.

How is Computing assessed?

At AS level, both units are written papers that are worth 25% of the overall grade. A2 level is worth 75% of the overall grade and involves a written paper and a practical programming project.

Subject specific requirements?

At least a grade B in Mathematics, or at least a grade C in Computing at GCSE level.

AMENDMENT:

Business (Applied) AS/A Level

Subject specific requirements?

It is not necessary for you to have followed a course in Business Studies at GCSE level. The standard Sixth Form entry requirement of a minimum of 5 A*-C grades, including English, is all that we ask for.